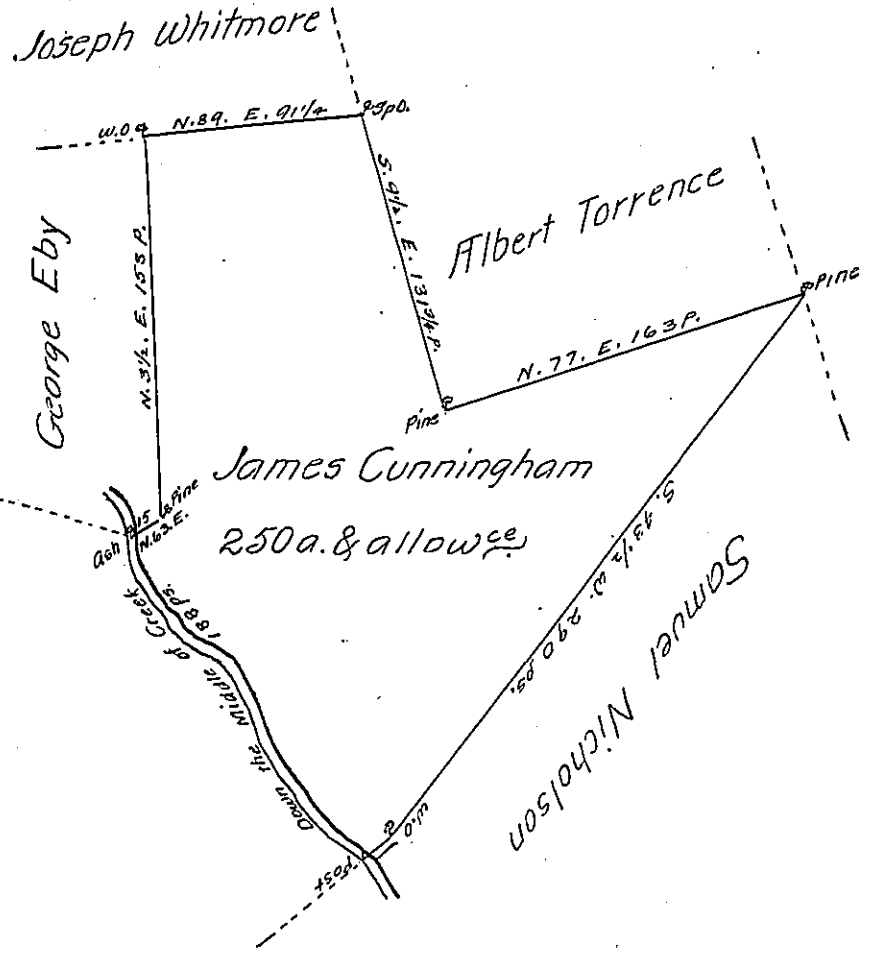


- Courses on the Creek*
- 1. N. 51. W. 38 1/2
 - 2. N. 11. W. 30
 - 3. N. 86. W. 6 3/4
 - 4. N. 6. W. 27
 - 5. N. 30. W. 19
 - 6. S. 88. W. 11 1/2
 - 7. N. 26. W. 44 1/2
 - 8. N. 21. E. 10 3/4
- 188 ps. in all



A Draft of a Tract of Land situate in Letterkenny Township in the County of Franklin Containing two hundred and fifty acres and the allowance of Six p Cent for Roads &c Surveyed February 29th 1788 in pursuance of a Warrant granted to James Cunningham bearing Date the fourth Day of February 1785.

Matth. Henderson D.S.

*To Daniel Brodhead Esqr. }
Surveyor General }*

IN TESTIMONY that the above is a copy of the original remaining on file in the Department of Internal Affairs of Pennsylvania, made conformably to an Act of Assembly approved the 16th day of February, 1833, I have hereunto set my Hand and caused the Seal of said Department to be affixed at Harrisburg, this first day of November 1904

James B. Brown
Secretary of Internal Affairs.